

LAND MONITORING ACTIVITIES OF THE ITALIAN NATIONAL SYSTEM FOR ENVIRONMENTAL PROTECTION

Michele Munafò ISPRA

2016: A 'NEW' ISPRA

Set up of **National Environmental Protection System (SNPA)**

19 Regional and **2** Province's Environmental Protection Agencies, under the **chairmanship of ISPRA**

Workforce: over **10,000**

Duty to provide **coordinated nation-wide environmental monitoring and protection**

Power to enforce the adoption of specific technical regulations

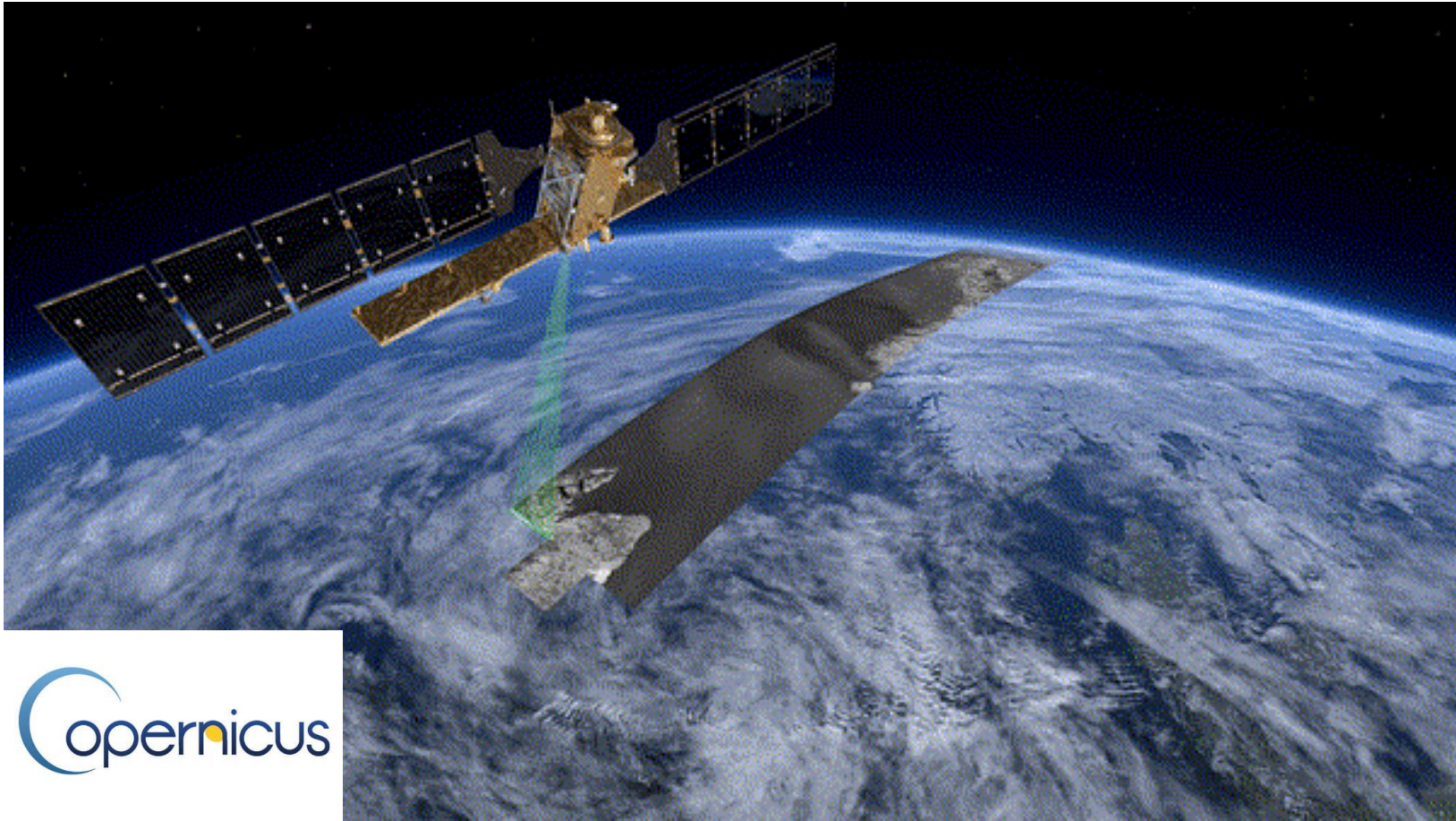








COPERNICUS SENTINEL SATELLITE DATA



Provision of precise and accessible information to improve
environmental management and mitigate climate change effects

LAND COVER AND URBAN EXPANSION

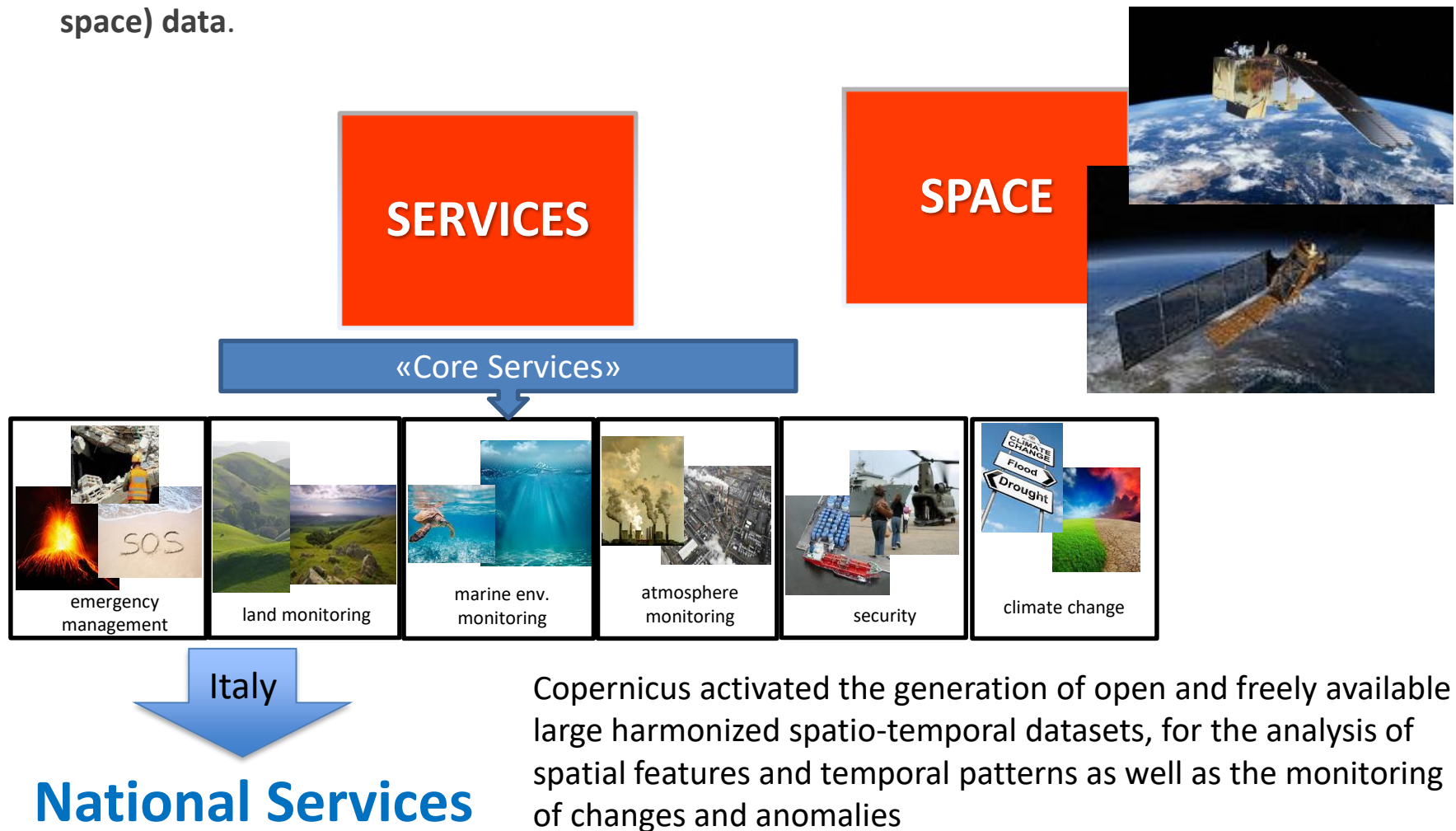
**Multi-temporal
comparison of
satellite imagery**



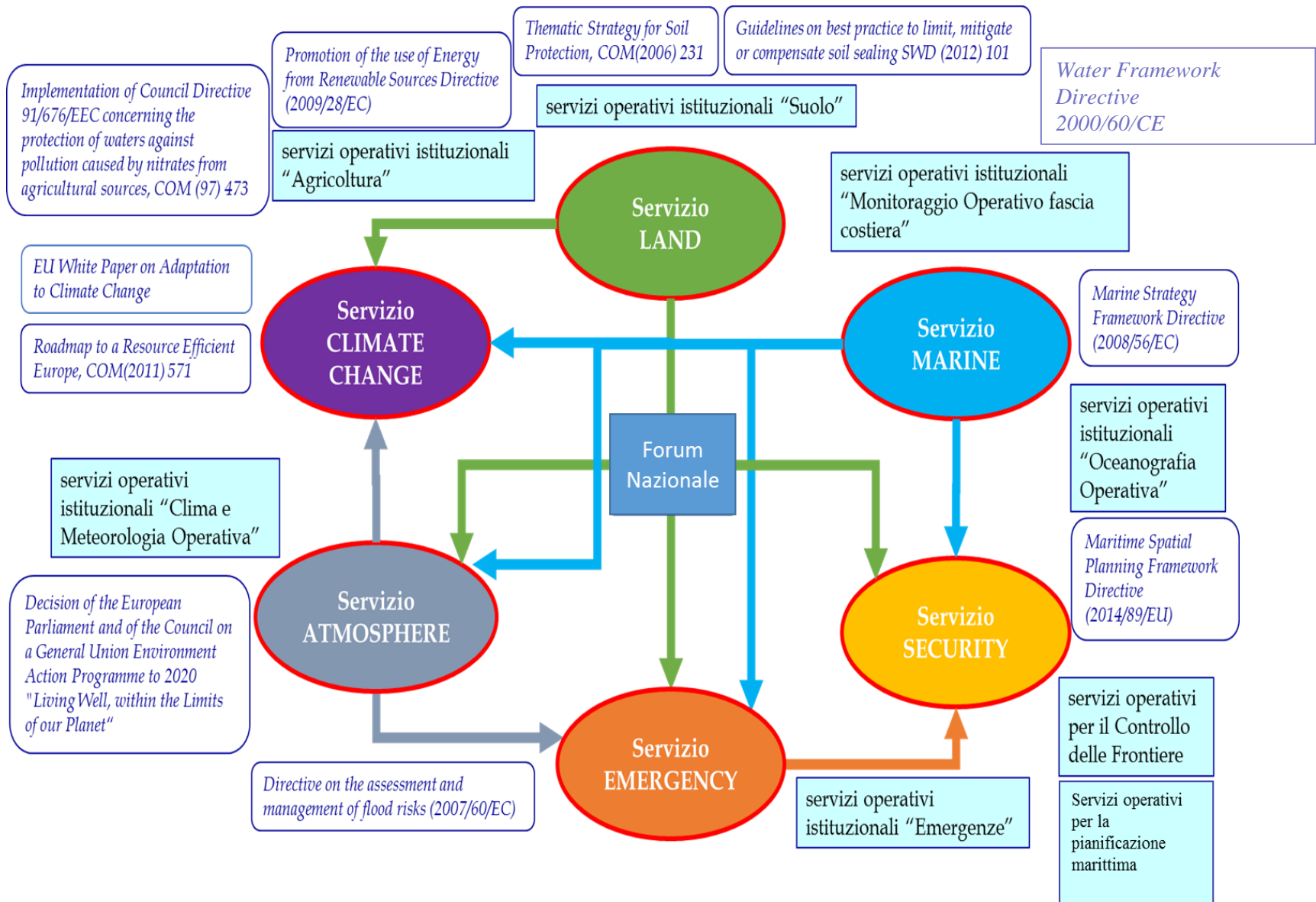
**Sentinel 2A - Turin
2015-2016**

COPERNICUS PROGRAMME

- Copernicus is the European Earth Observation Programme, looking at our planet and its environment for the ultimate benefit of all European citizens.
- Copernicus offers information services based on **satellite Earth Observation and in situ (non-space) data**.



COPERNICUS SERVICES TO SUPPORT NATIONAL POLICY AND EU REPORTING



Overview - Copernicus Services & Components



Land Monitoring Service (pan-EU & local)

Land Monitoring Service (global)



Marine Environment Monitoring Service



Atmosphere Monitoring Service



Climate Monitoring Service

Emergency Management Service



Security Service (Border surveillance)



Security Service (Maritime Surveillance)



Security Service (Support to External Action)



In-situ Coordination

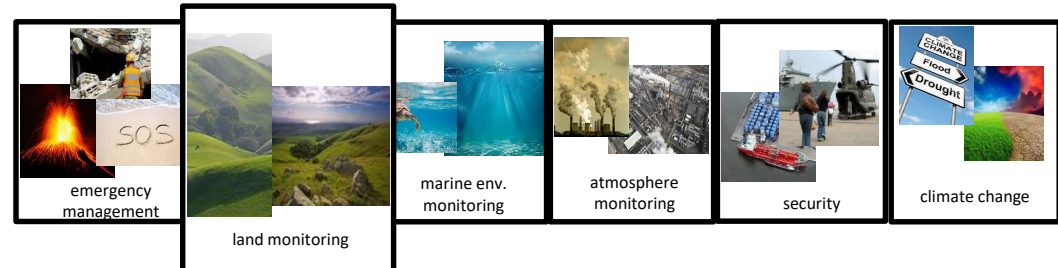


Copernicus

COPERNICUS LAND MONITORING SERVICE

The Copernicus Land Monitoring Service (CLMS) provides geographical information on land cover and on variables related, for instance, to the vegetation state or the water cycle.

It supports applications in a variety of domains such as spatial planning, forest management, water management, agriculture and food security.



Components



Global

provides a series of bio-geophysical products on the status and evolution of the land surface at global scale at mid and low spatial resolution



Pan-European

provides information about the land cover and land use (LC/LU), land cover and land use changes and land cover characteristics



Local

focuses on different hotspots, i.e. areas that are prone to specific environmental challenges and problems



Reference data

All of the Copernicus services need access to in-situ data in order to ensure an efficient and effective use of Copernicus space-borne data

PAN-EU

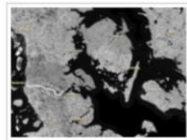
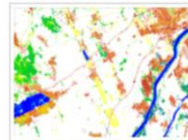


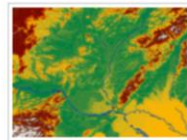
Image Mosaics



CORINE Land Cover



High Resolution
Layers



Reference Data

1) **Corine Land Cover** (1990-2000-2006-2012-2018*)

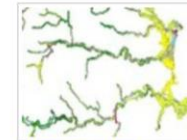
2) **High Resolution Layers**

- Imperviousness (2006-2009-2012-2015*-2018*)
- Forest Type and Tree Cover Density (2012-2015*-2018*)
- Permanent grasslands (2012-2015*-2018*)
- Wetlands (2012-2015*-2018*)
- Water bodies (2012-2015*-2018*)

LOCAL



Urban Atlas



Riparian Zones



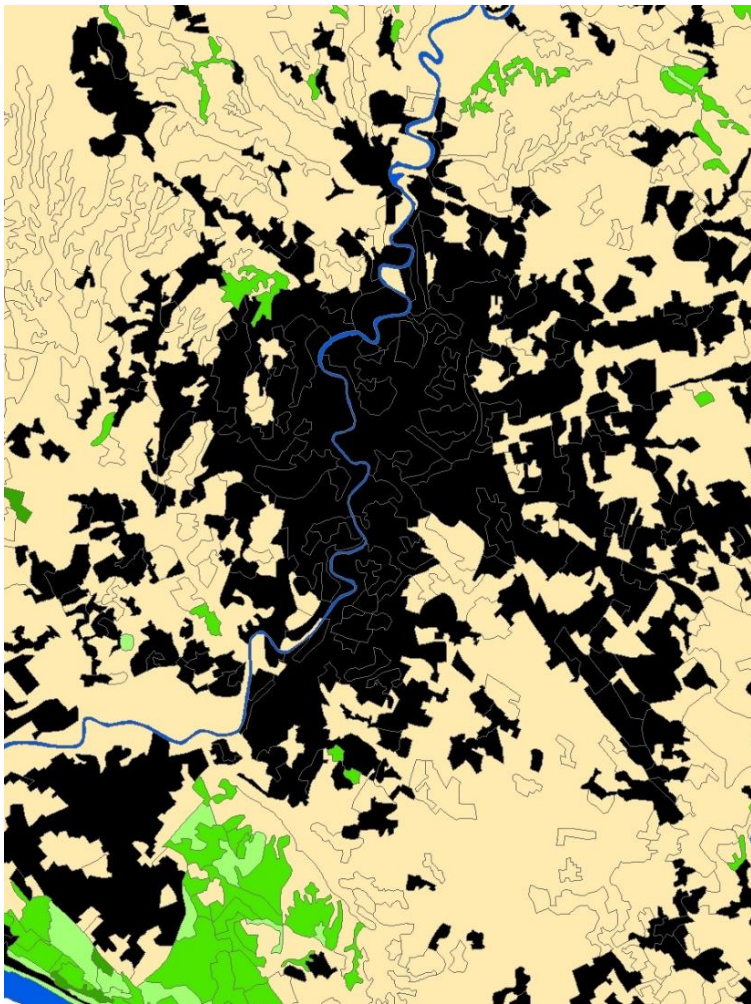
Natura 2000 (N2K)

Urban Atlas EU regional policy justifies the production and maintenance of detailed land cover and land use information over major EU city areas. The Urban Atlas provides pan-European comparable land use and land cover data covering a number of Functional Urban Areas (FUA). In 2012, an additional layer (Street Tree Layer - STL) was produced for a selection of FUAs.

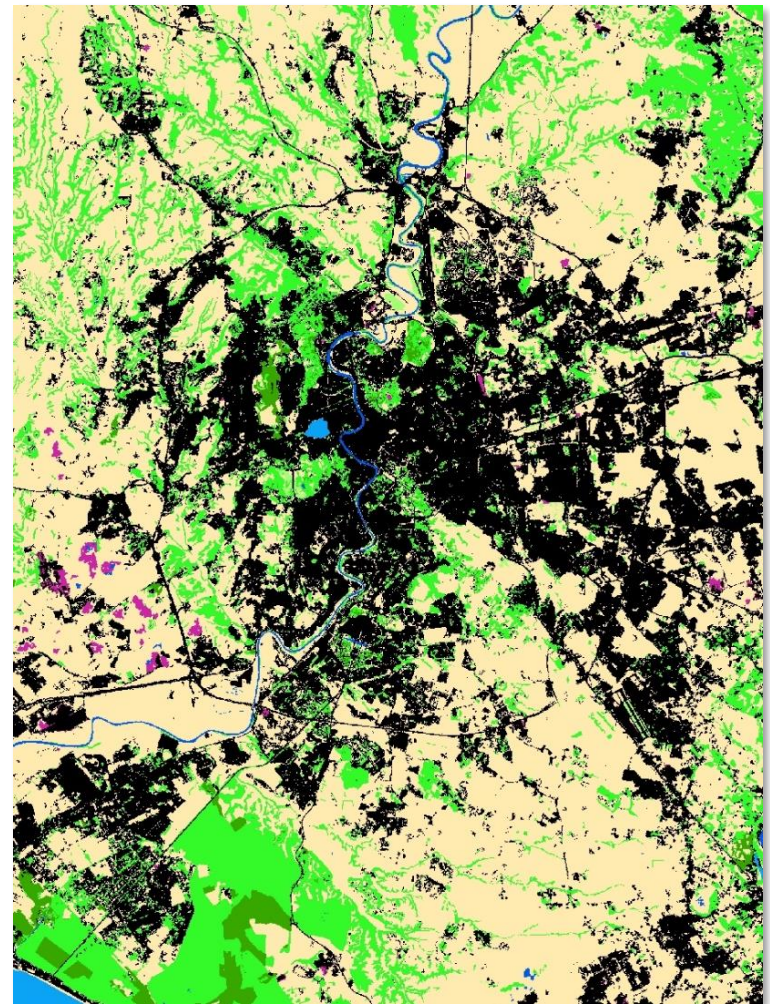
Riparian Zones The next local component addresses land cover and land use in areas along rivers, i.e. the riparian zones. The rationale for this local component is provided by the need to monitor biodiversity at European level, amongst other in the framework of improving the “green” and “blue” infrastructures in the European Union.

Natura 2000 The Natura 2000 (N2K) areas are also important hotspots to have in consideration. The aim of the first N2K project was to assess whether Natura2000 sites are effectively preserved and whether a decline of certain grassland habitat types is halted.

CORINE LAND COVER



HIGH RESOLUTION LAYERS

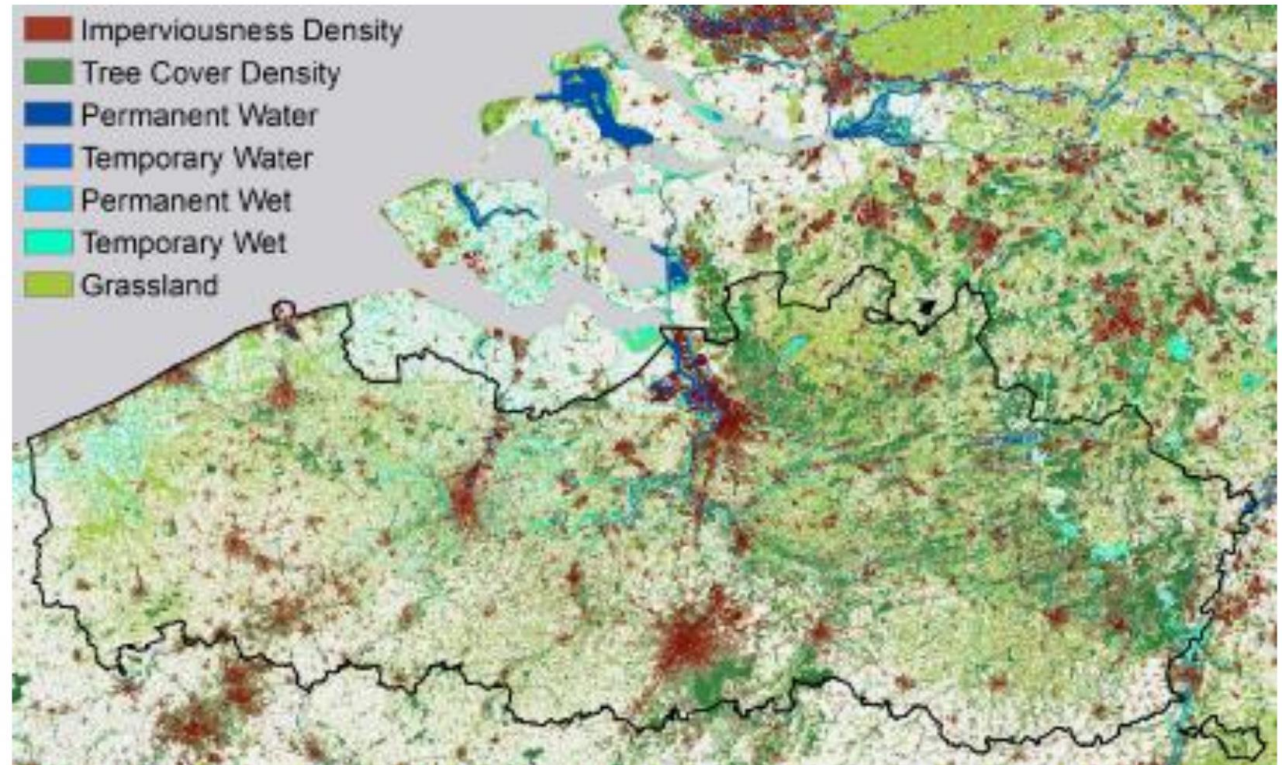




Land
Monitoring

Pan - European component

- HRLs on land cover production status:
 - 4 HRL2015 status layers published on the land portal; change layers to follow soon





Land
Monitoring

pan - European component

- CLC2018 production
 - all EE39 countries in production
 - Extra training sessions for national production teams on-going
 - 9 countries passed already 1st verification of CLC deliveries
- Technical specifications for HRL2018 being drafted
 - imperviousness (+ European settlements based on JRC ESM method under discussion)
 - forests
 - grasslands → parameters on intensity of management in view of agro-environmental monitoring of the CAP under investigation
 - wetness-water
- CfT for high resolution phenology product being prepared for publication
- EAGLE group contracted, working on draft specifications for CLC+.
 - Version 5 of draft specs in preparation

CORINE LAND COVER EVOLUTION

EEA/IDM/R0/17/003

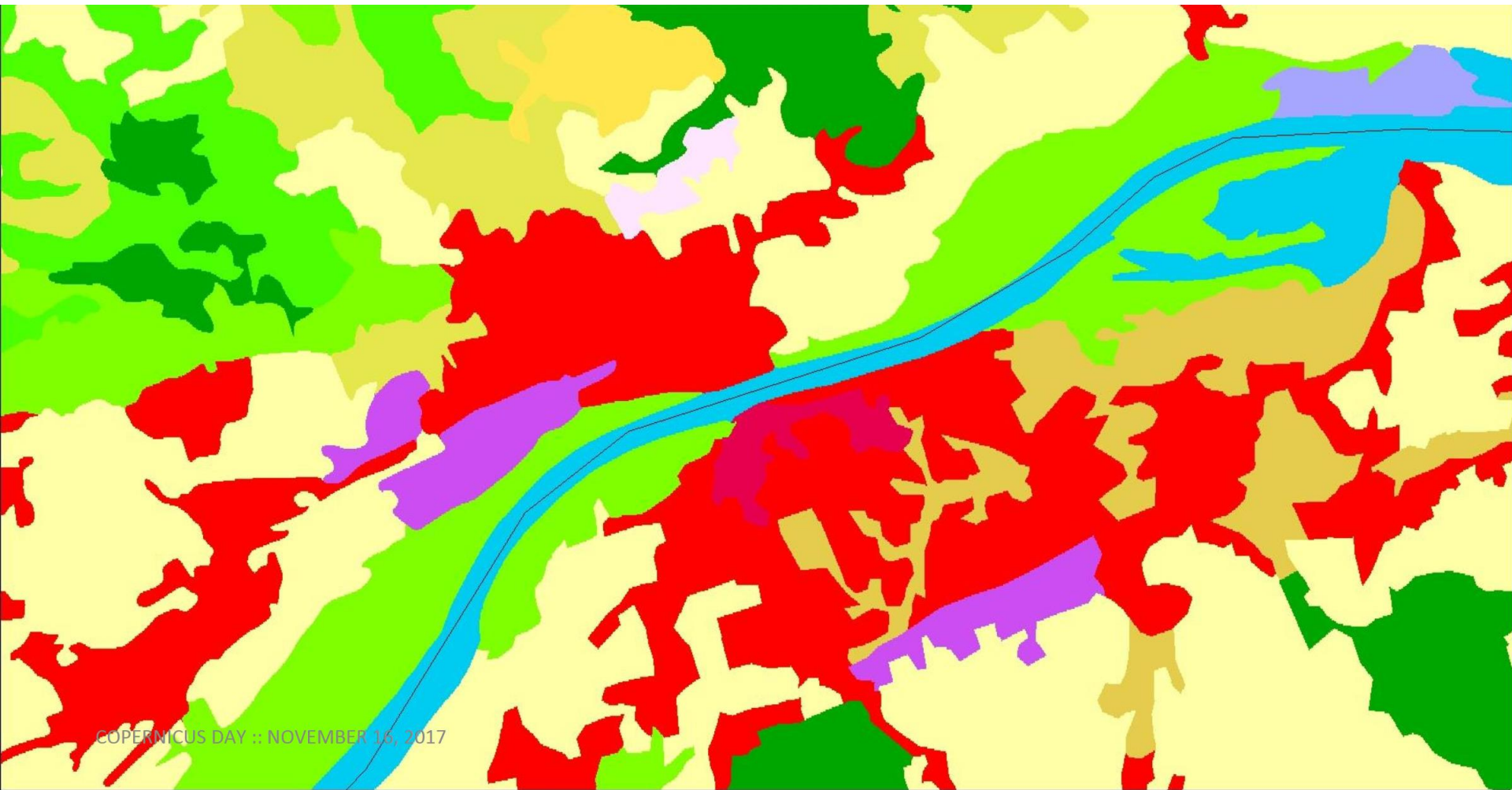
**Technical specifications for implementation
of a new land-monitoring concept based on
EAGLE**

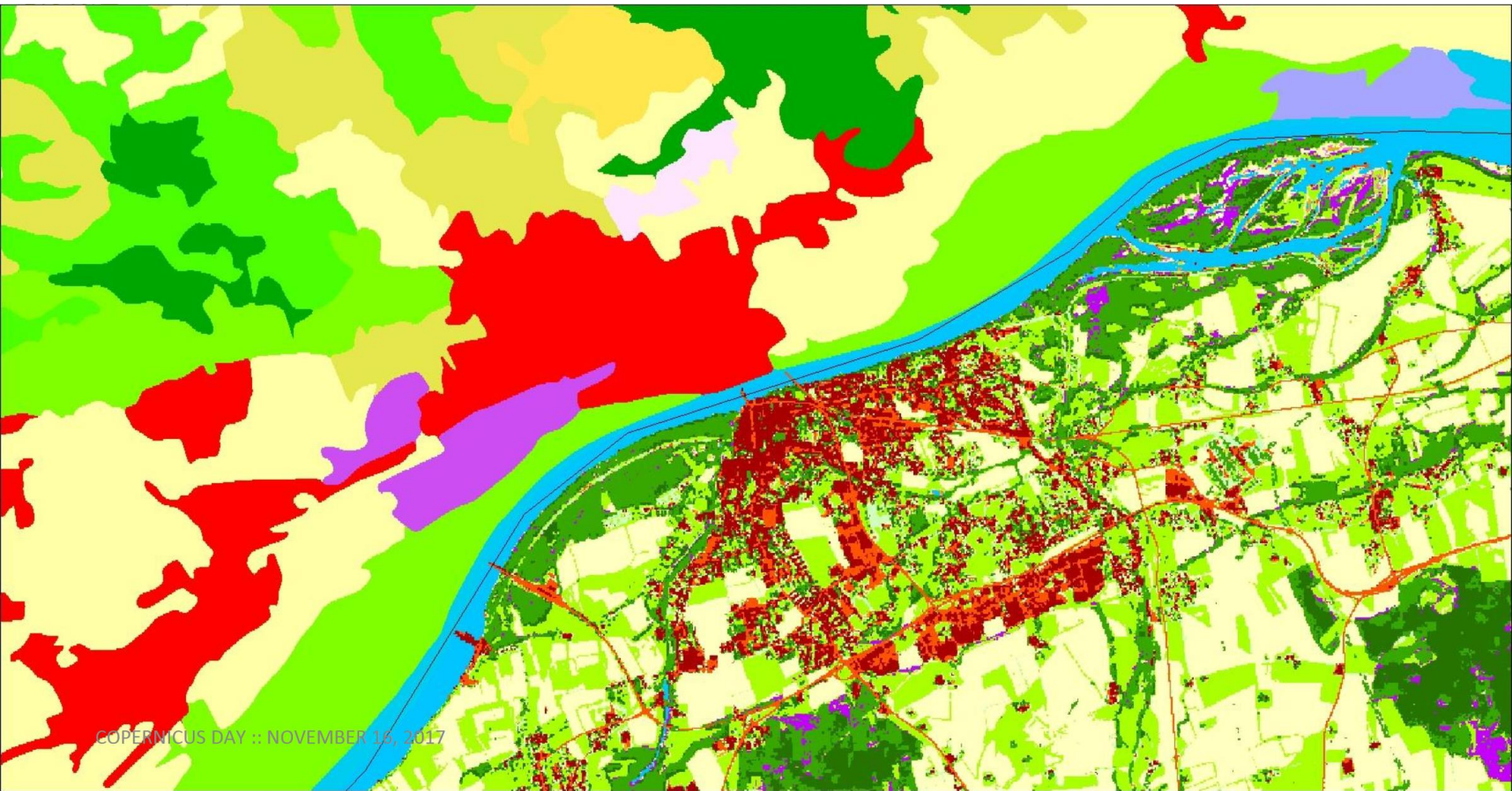
D3: Draft design concept and CLC-Backbone,
CLC-Core technical specifications, including
requirements review.

Version 3.0

10.11.2017

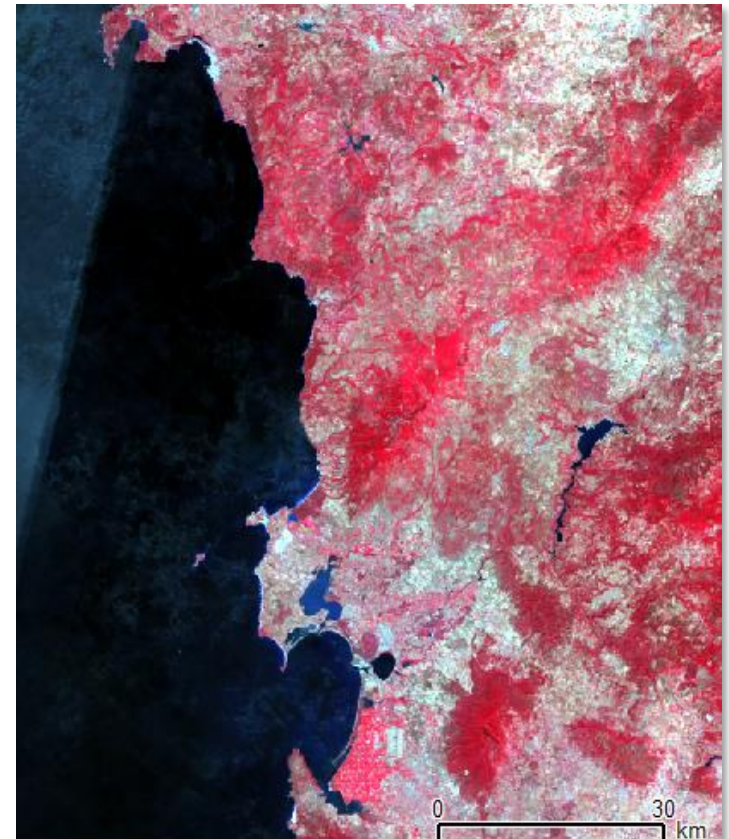




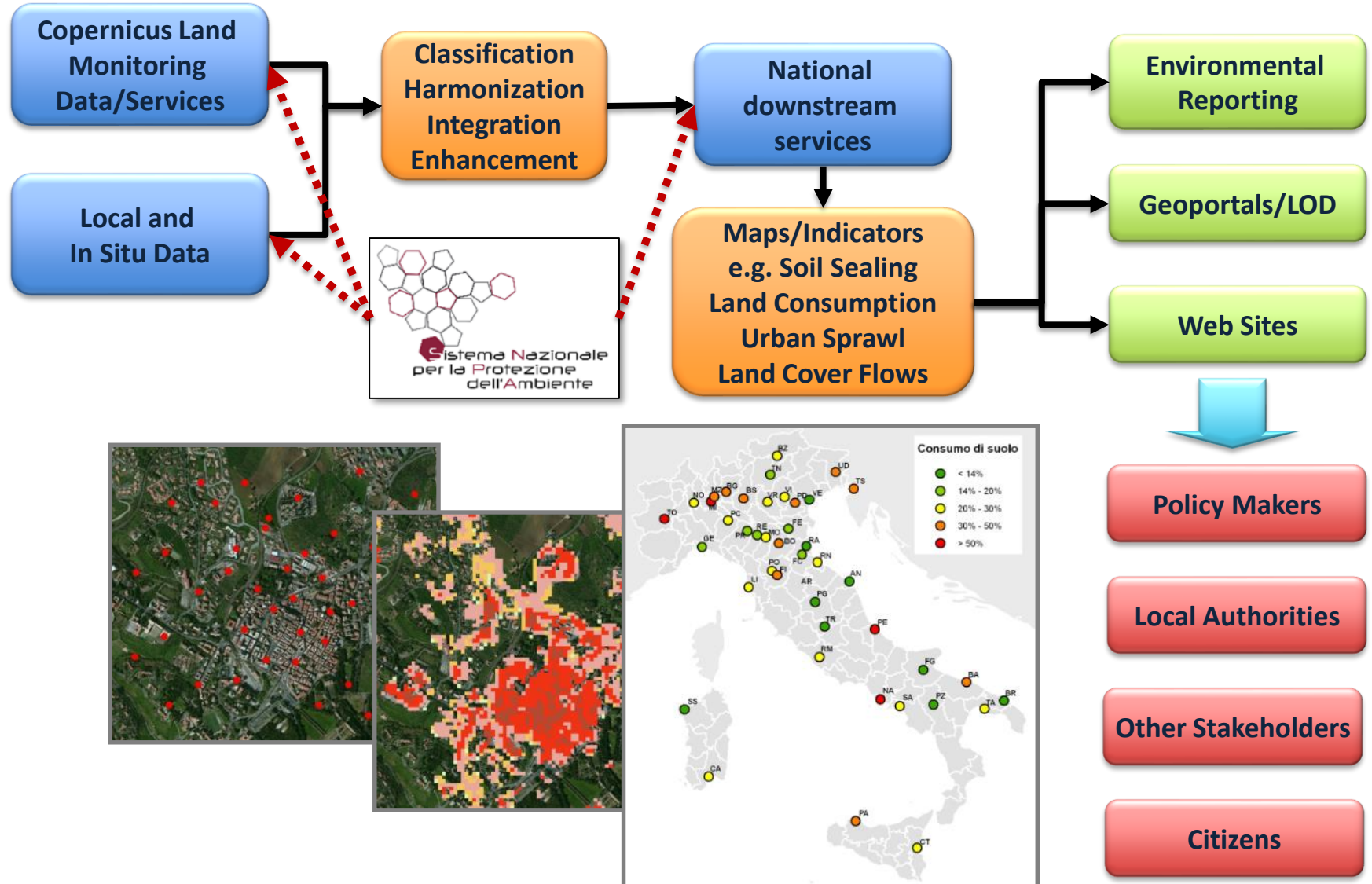


COPERNICUS DAY :: NOVEMBER 18, 2017

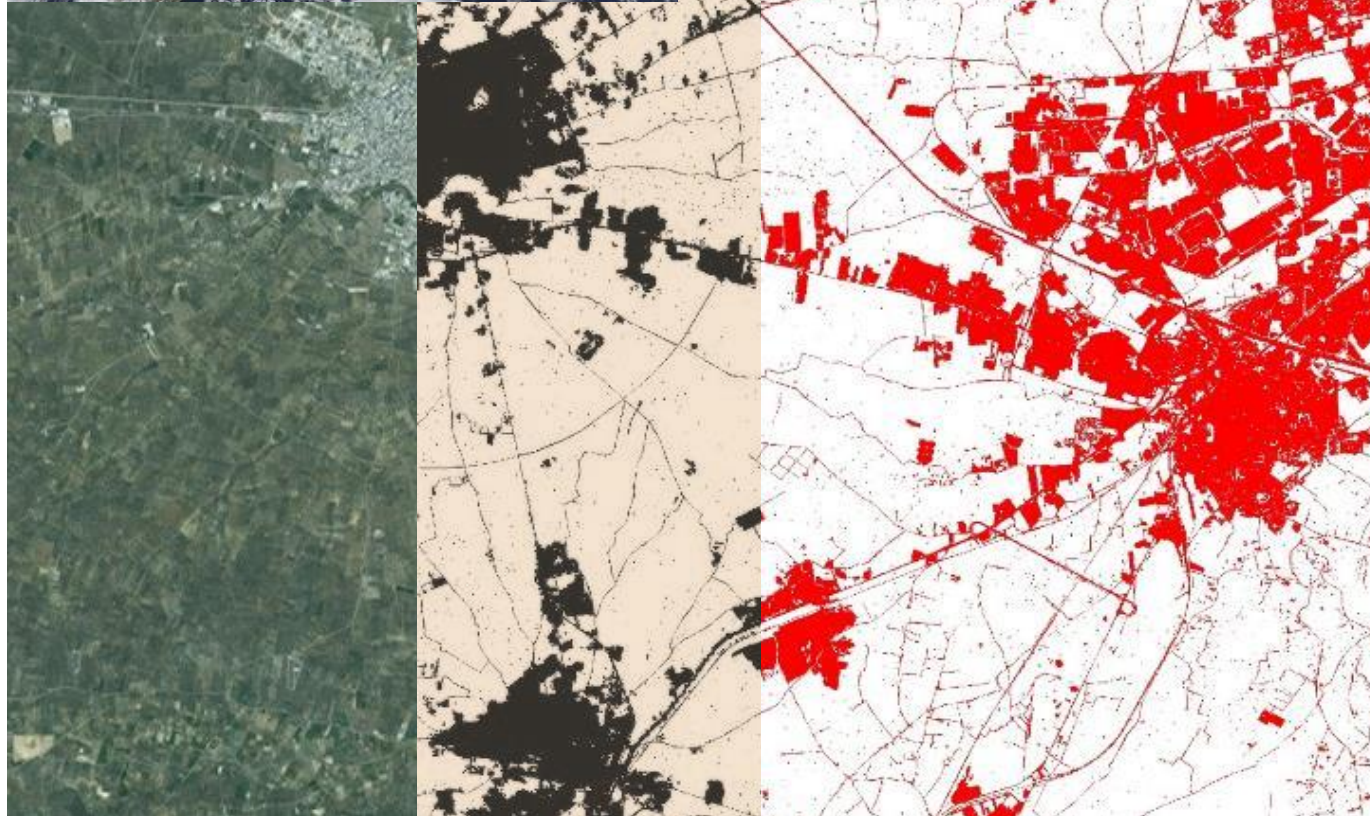
SENTINEL 2



LAND MONITORING AND ENVIRONMENTAL REPORTING



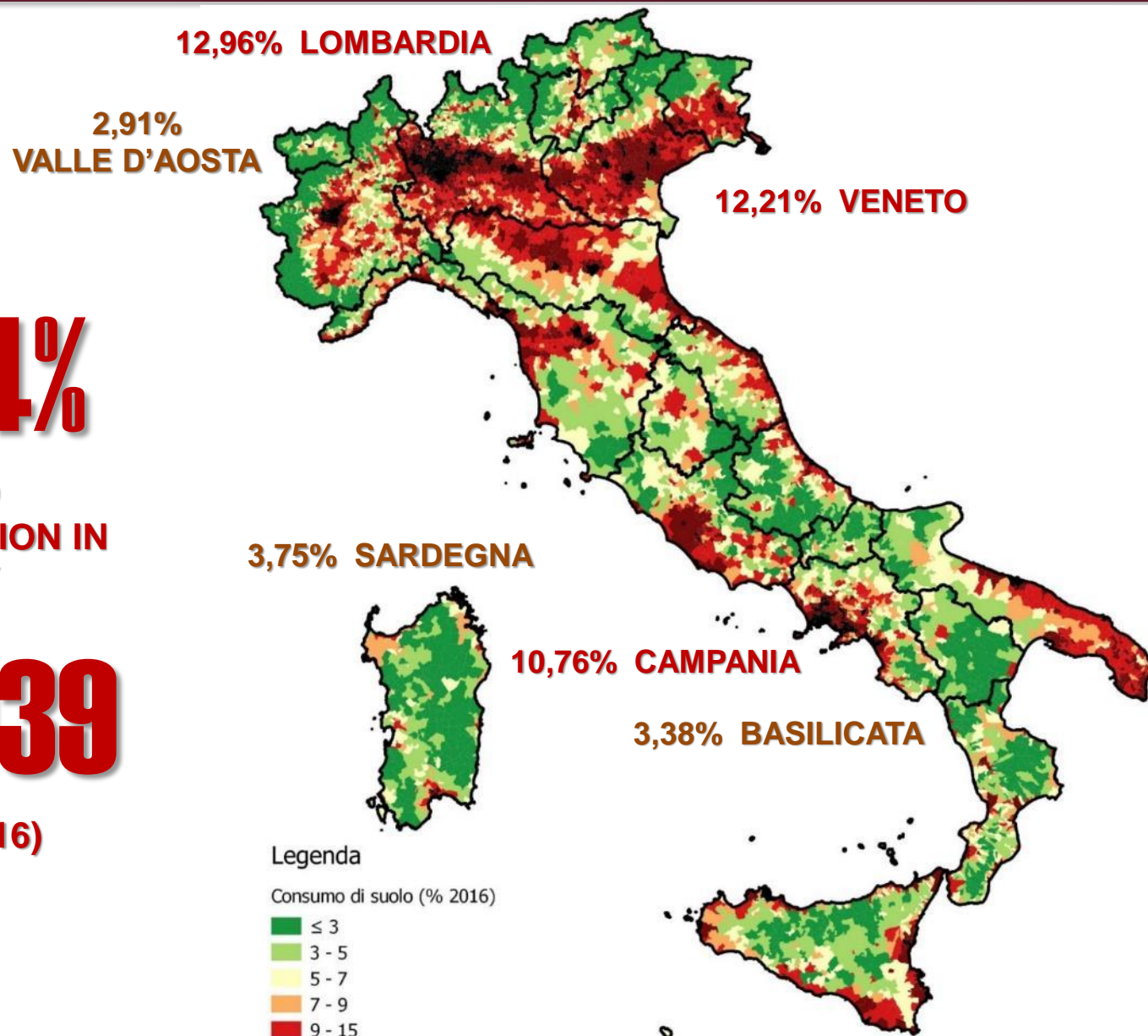
LAND TAKE/SOIL SEALING

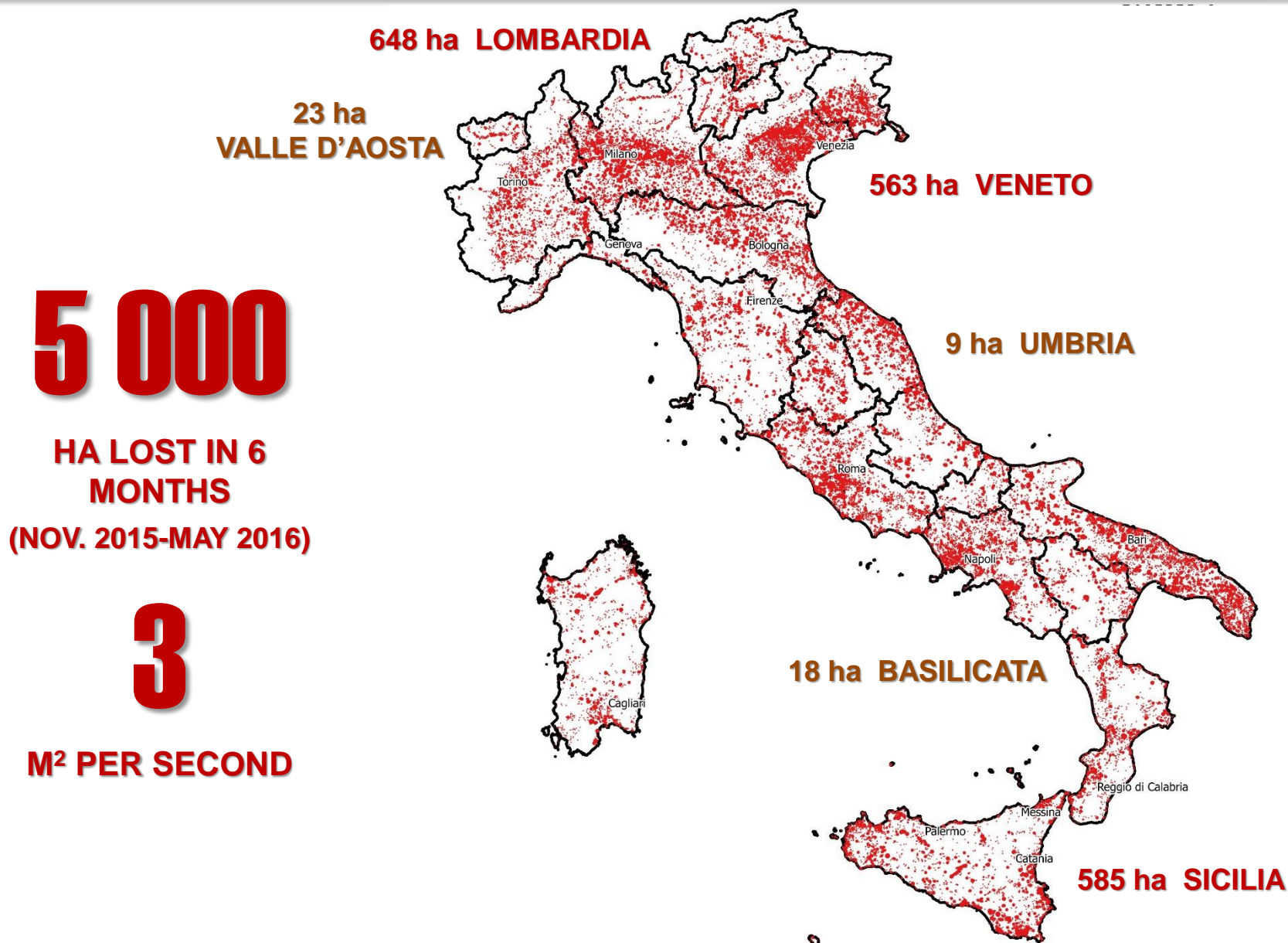


Copernicus EU map

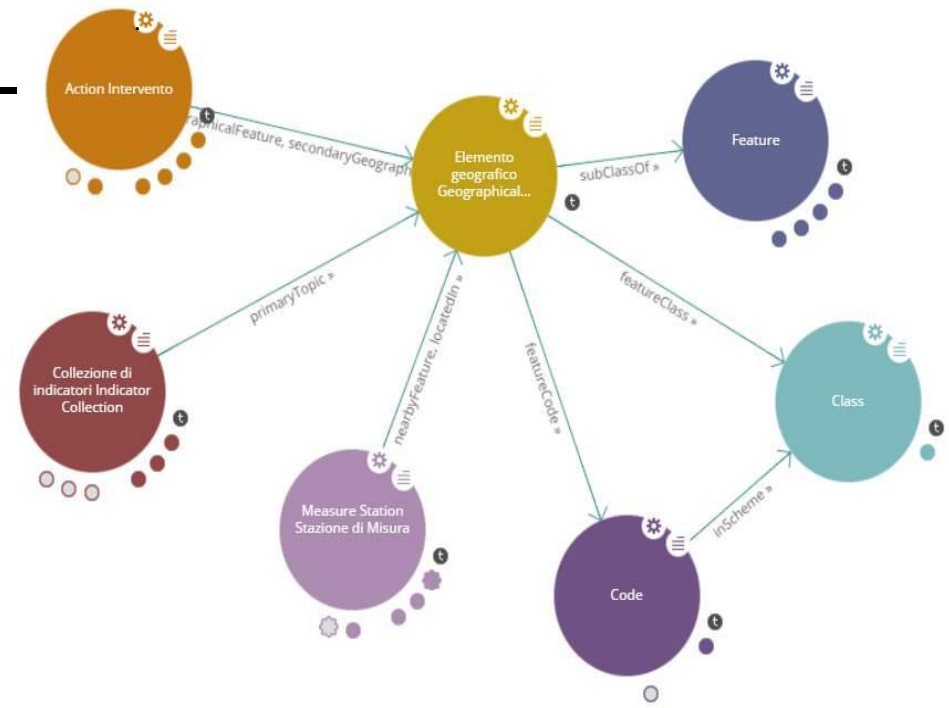
National map
(ISPRA/SNPA)

7.64%
LAND
CONSUMPTION IN
ITALY
23 039
KM² (2016)





SNPA has started publishing data (indicators) on land monitoring in Linked Open Data (LOD) format - a technological and methodological approach to link the Open Data of the database - **making them part of a single global and shared information space.**



THANK YOU FOR YOUR ATTENTION!
